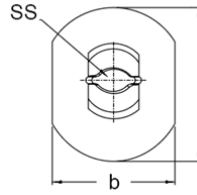


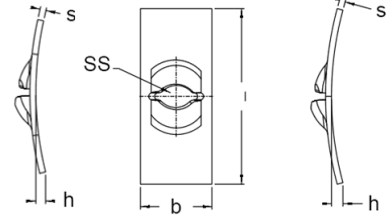
Speed Nuts®  
Flat Type



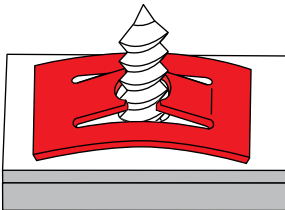
0: Round (Sides Cut Off)



1: Rectangular



APPLICATION INFORMATION



- Used with screws to hold two panels together
- Replace threaded nuts, lock washers and spanner washers
- Require less torque than standard hex nuts
- Fast and easy to install
- Provide maximum holding power at minimum cost per fastener
- Won't shake loose from vibration, yet can be easily loosened when desired without worry about rust-frozen screw threads
- Can be installed prior to painting processes so threads won't fill
- Used in smaller applications where space is limited, such as small electrical or mechanical devices



On Studs

# Speed Nuts®

## Flat Type

Imperial

Part Number	Legacy Part Number	Thread Specification (SS)	Length (l)	Width (b)	Material Thickness (s)	Part Shape
135775	C07795-440	4-40	0.440	0.250	0.012	1
136624	C08595-012	6-32	0.380	0.343	0.012	0
136600	C07000-8	8-18 (ST4.2)	0.630	0.410	0.028	1
136601	C07000-832	8-32	0.500	0.310	0.017	1
136597	C07000-10	10-16 (ST4.8)	0.750	0.500	0.031	1
136513	C00917-10Z	10-16 (ST4.8)	0.870	0.375	0.031	1
136520	C01150-1024	10-24	0.750	0.437	0.022	1
136521	C01151-1024	10-24	0.750	0.437	0.022	1
136598	C07000-1420	1/4-20	0.750	0.500	0.025	1
136634	C09375-012	1/4-20	1.310	1.312	0.012	1
136632	C09186-014	5/16-18	0.880	0.687	0.014	0
136625	C08617-017	3/8-16	1.000	0.687	0.017	1
136522	C01156-014	7/16-20	0.910	0.687	0.014	0
137472	D07516-017	1/2-13	1.220	0.875	0.017	1

*Most parts manufactured in spring steel*